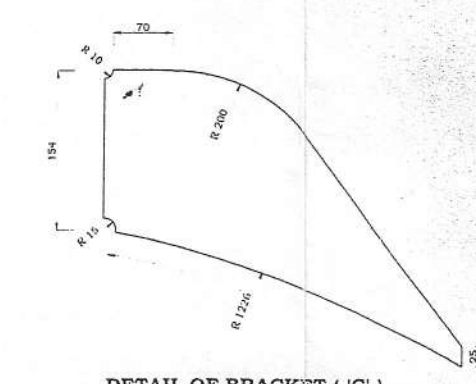
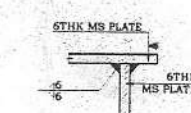
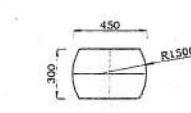
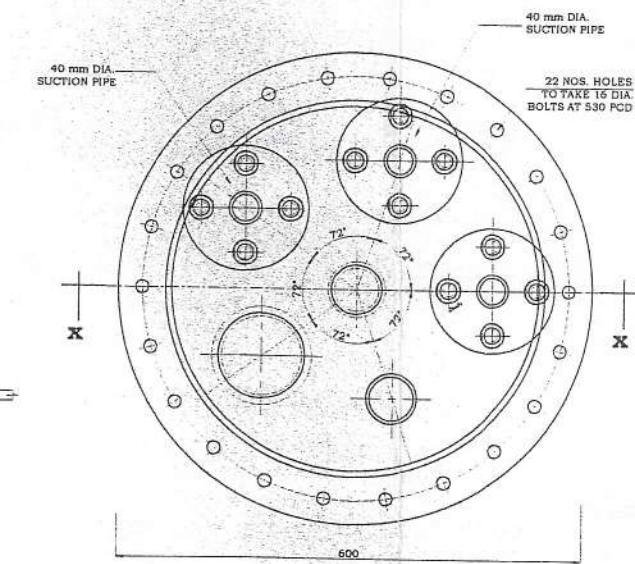
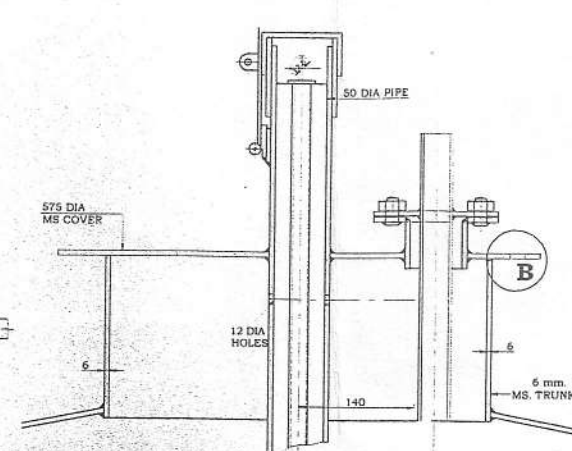


ORIGINAL



- NOTE
- (1) TANK TO BE FABRICATED WITH MILD STEEL MATERIAL CONFORMING TO API 650 AND WELDED AS DETAILED IN DRAWINGS WITH THE NECESSARY BRACES ETC.
 - (2) HORIZONTAL AND CYLINDRICAL BEAMS TO HAVE BUT STRAPS WELDED AS DETAILED.
 - (3) TANK TO BE SUPPLIED WITH MANHOLE COVER FITTINGS ASBESTOS RING AND STRAINER TO SUCTION PIPES AND BOLTS & NUTS AS SHOWN ON DRAWING.
 - (4) HORIZONTAL AND CYLINDRICAL BEAMS TO HAVE BUT STRAPS WELDED AS DETAILED. TANK TO BE AIR PRESSURE TESTED TO 35 KPA FOR 2 HOURS AT THE FACTORY & IN THE PRESENCE OF C.P.C. PERSONNEL.
 - (5) 50 X 50 X 6 ANGLE IRON MANHOLE RIM TO BE MACHINED IF NECESSARY TO ENSURE THAT THE TANK IS ABSOLUTELY AIR TIGHT.
 - (6) G. I. PIPE TO BE GRADED IN CENTIMETRES WITH SUB DIVISIONS IN 2.5 MILLIMETRES INCLUDING BOTTOM END BRASS FERRULE & 12 MM GAP.
 - (7) UNLESS SPECIFIED ALL DIMENSIONS ARE IN MILLIMETRES.

REV.	DESCRIPTION	DATE

CEYLON PETROLEUM CORPORATION

ENGINEERING DEPARTMENT,
609, Dr. DENISTER DE SILVA MAWATHA
COLOMBO - 09.
T.P.NO: 0115455455, 0115661616
FAX NO: 0115455408

PROJECT: FABRICATION OF 5000 IG TANK

TITLE: FABRICATION DETAILS AND FITTINGS OF 5000 IG CAPACITY TANK

DRAWING NO: CEYPET / ENG / 0102

SCALE: Not to scale DATE: 20.06.2012

DRAWN BY: SASHIKA

CHECKED BY:

APPROVED BY:

