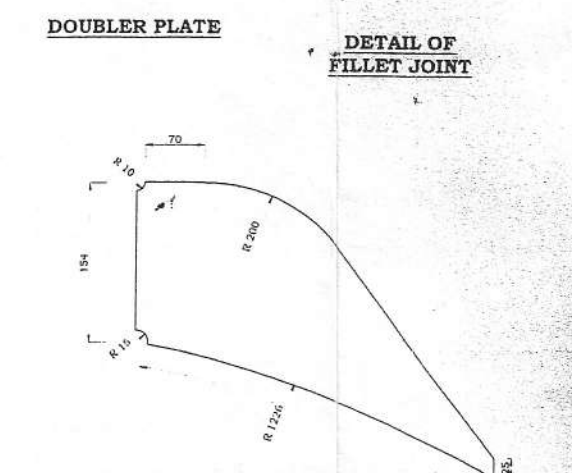
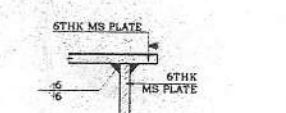
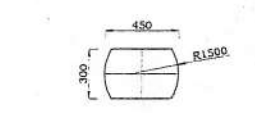
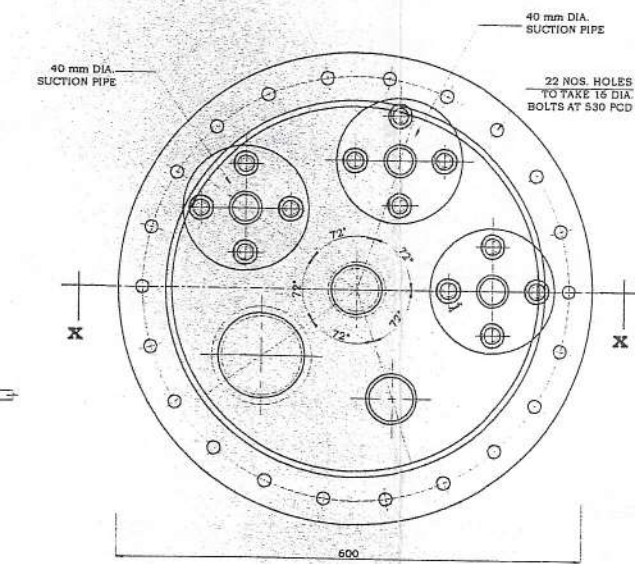
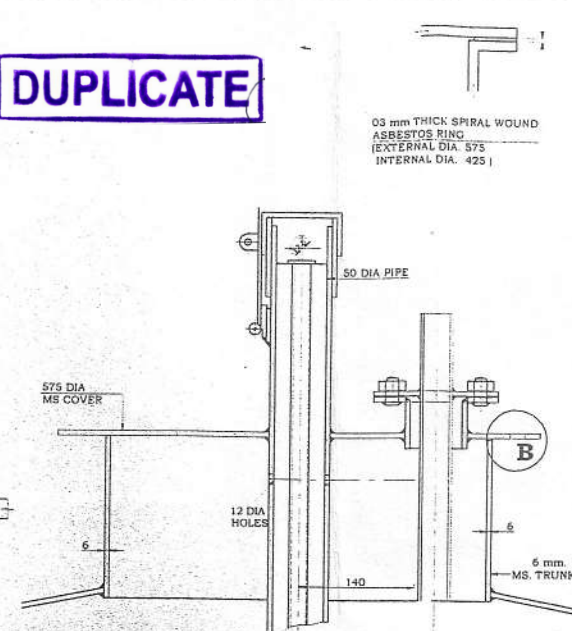


**DUPLICATE**



- NOTE
- (1) TANK TO BE FABRICATED WITH MILD STEEL MATERIAL CONFORMING TO API 650 AND WELDED AS DETAILED IN DRAWINGS WITH THE NECESSARY BRACES ETC.
  - (2) HORIZONTAL AND CYLINDRICAL BEAMS TO HAVE BUT STRAPS WELDED AS DETAILED.
  - (3) TANK TO BE SUPPLIED WITH MANHOLE COVER FITTINGS ASBESTOS RING AND STRAINER TO SUCTION PIPES AND BOLTS & NUTS AS SHOWN ON DRAWING.
  - (4) HORIZONTAL AND CYLINDRICAL BEAMS TO HAVE BUT STRAPS WELDED AS DETAILED. TANK TO BE AIR PRESSURE TESTED TO 35 kPa FOR 2 HOURS AT THE FACTORY & IN THE PRESENCE OF C.P.C. PERSONNEL.
  - (5) 50 X 50 X 6 ANGLE IRON MANHOLE RIM TO BE MACHINED IF NECESSARY TO ENSURE THAT THE TANK IS ABSOLUTELY AIR TIGHT.
  - (6) C. I. PIPE TO BE GRADED IN CENTIMETRES WITH SUB DIVISIONS IN 2.5 MILLIMETRES INCLUDING BOTTOM END BRASS FERRULE & 12 MM GAP.
  - (7) UNLESS SPECIFIED ALL DIMENSIONS ARE IN MILLIMETRES.

REV.	DESCRIPTION	DATE

**CEYLON PETROLEUM CORPORATION**

ENGINEERING DEPARTMENT,  
609, Dr. DENISTER DE SILVA MAWATHA  
COLOMBO - 09.  
T.P.NO: 0115455455, 0115661616  
FAX NO: 0115455408

PROJECT: FABRICATION OF 5000 IG TANK

TITLE: FABRICATION DETAILS AND FITTINGS OF 5000 IG CAPACITY TANK

DRAWING NO: CEYPET / ENG / 0102

SCALE: Not to scale DATE: 20.06.2012

DRAWN BY: SASHIKA

CHECKED BY:

APPROVED BY: