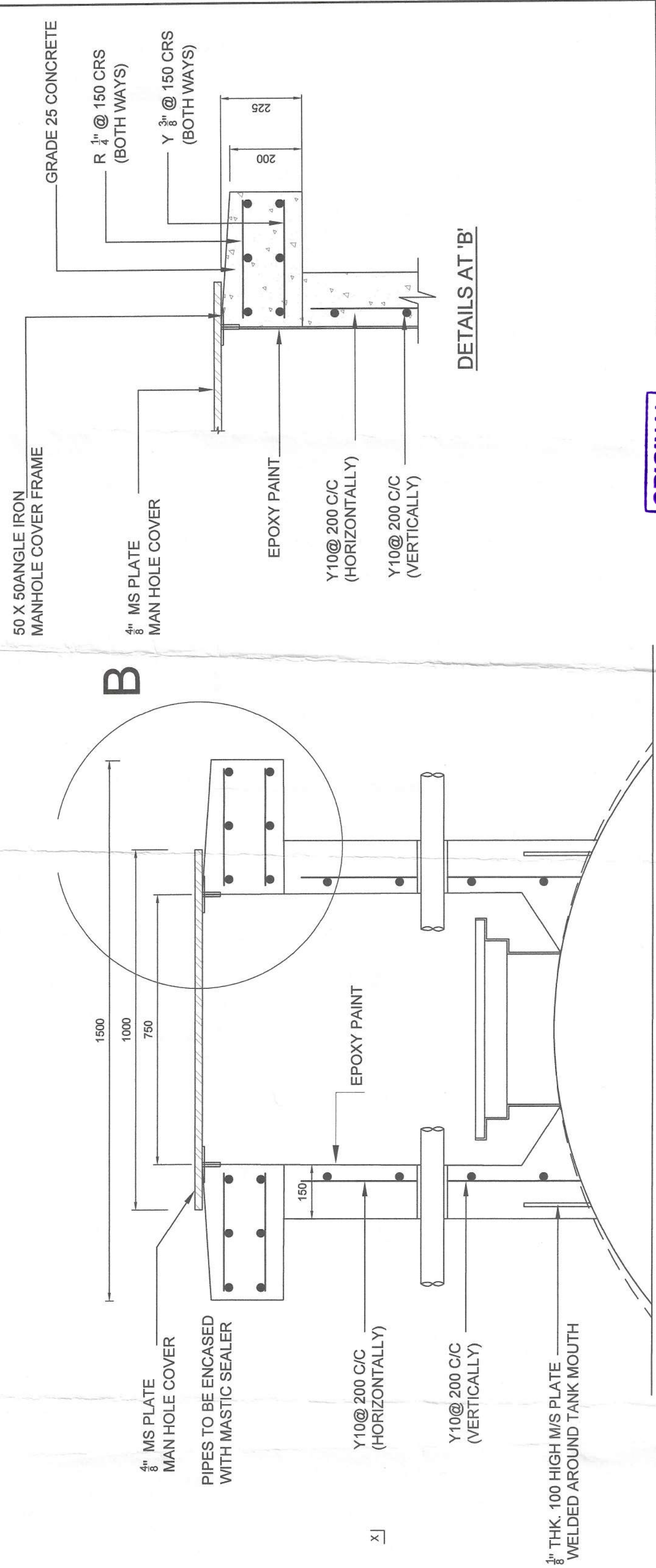
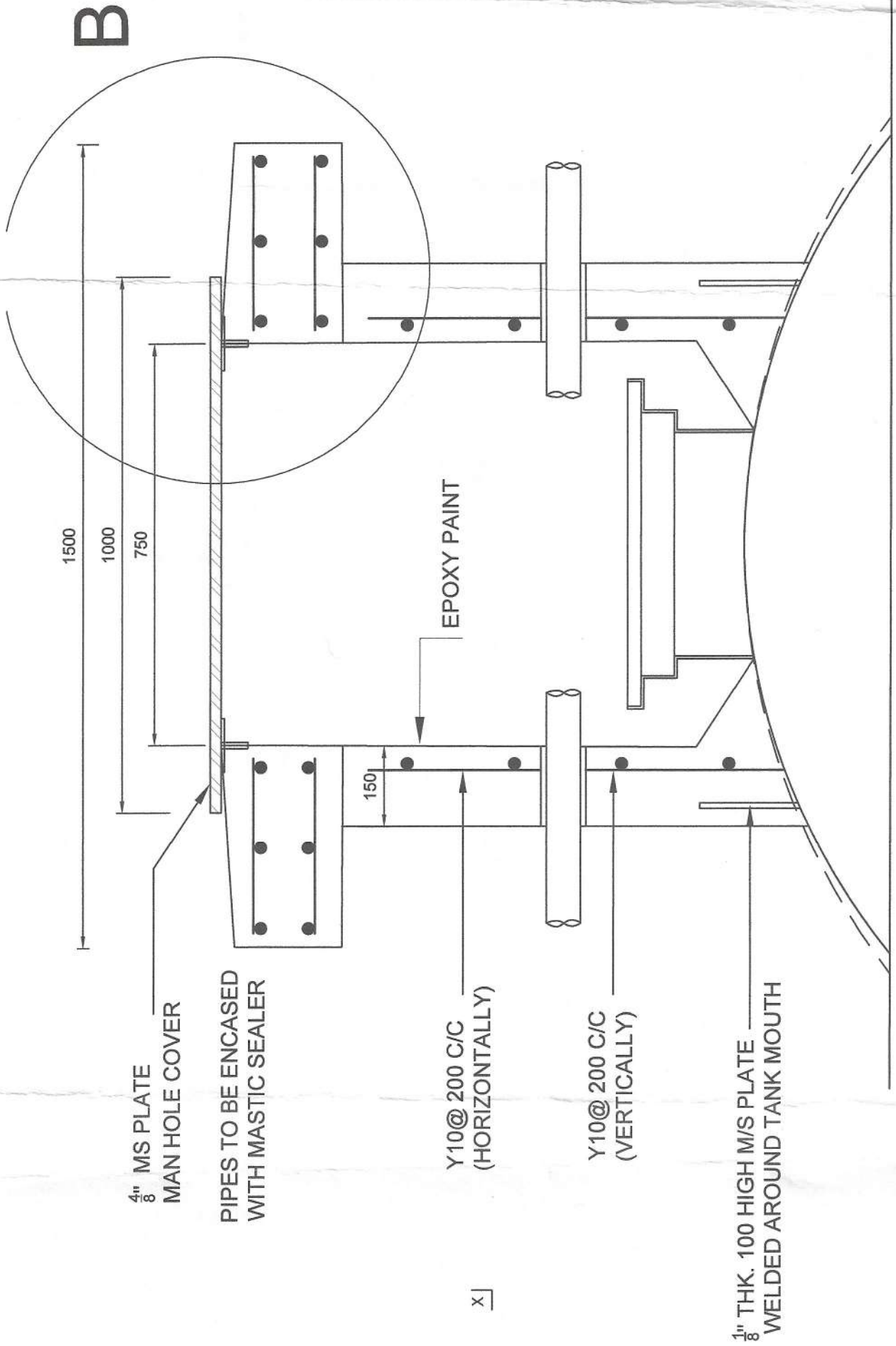


PLAN



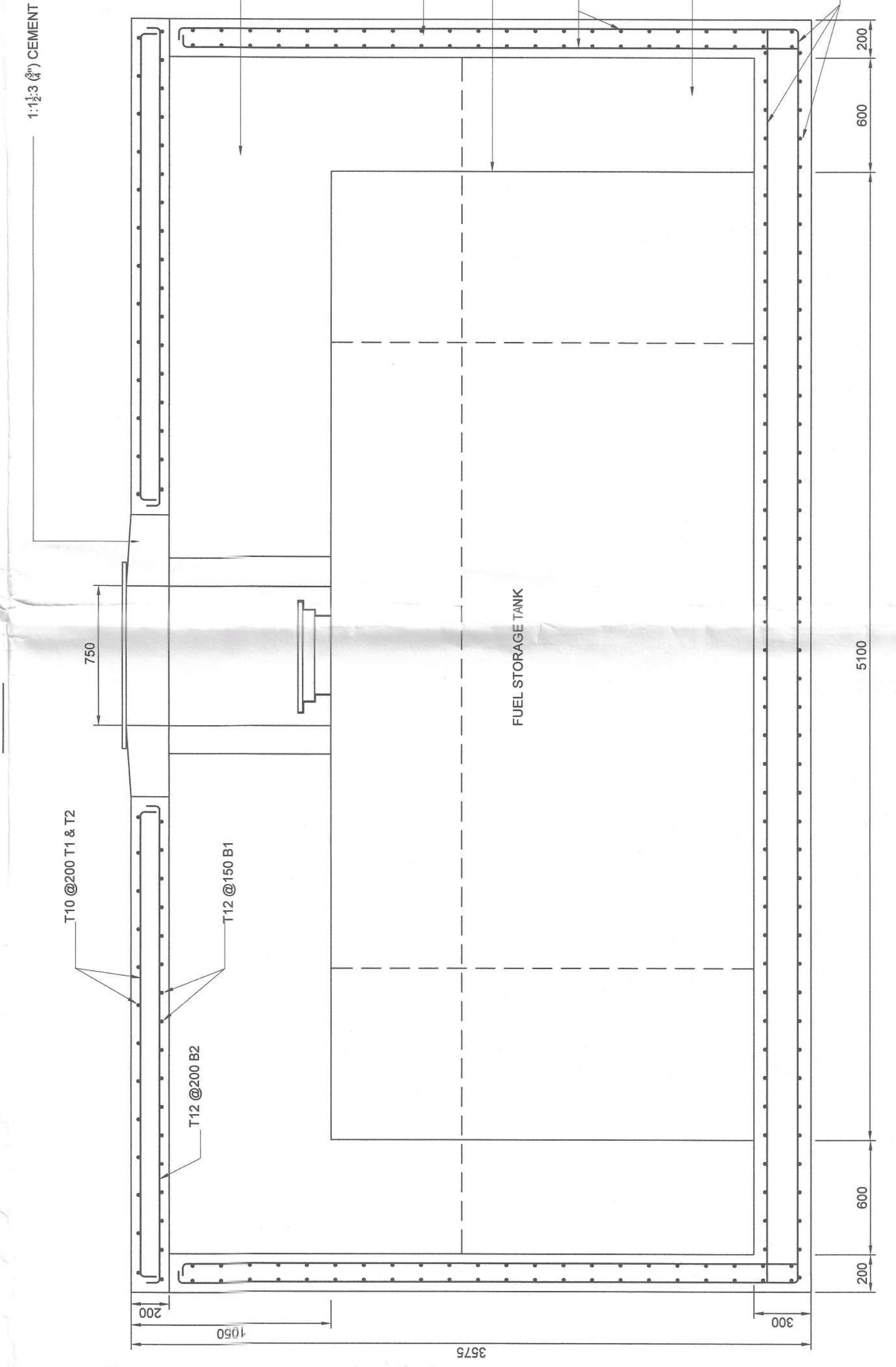
DETAILS AT 'A'



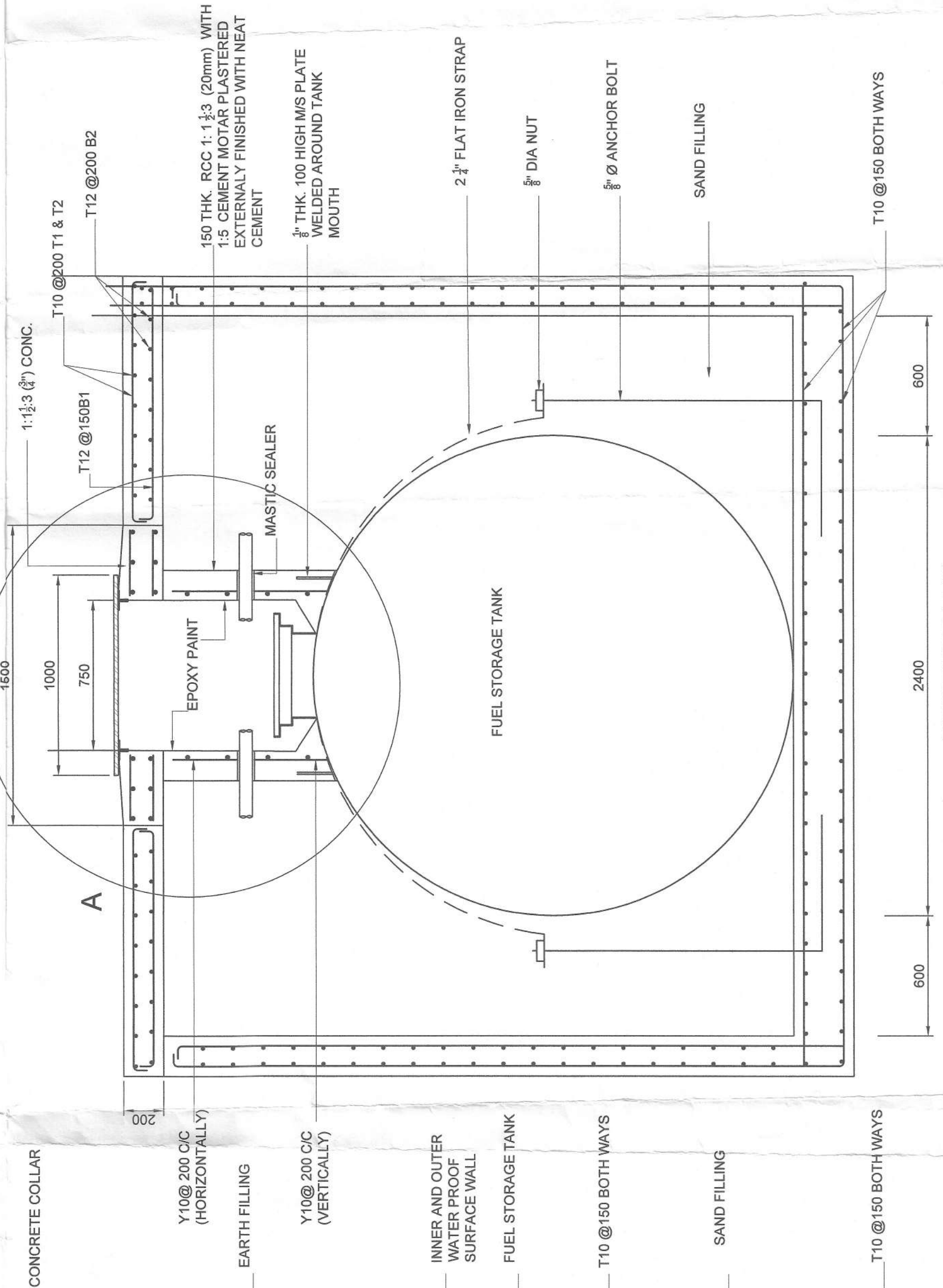
DETAILS AT 'B'

ORIGINAL

- NOTE**
1. ALL DIMENSIONS ARE IN MILLIMETERS.
 2. THE NECESSITY OF THE 150 REINFORCED CEMENT CONCRETE YARD SLAB WILL BE DECIDED AT SITE.
 3. IF THE YARD IS NOT DONE MANHOLE FRAME SHOULD BE FITTED TO 300mm WIDE 150mm THICK 1:2:4 (7) CEMENT CONCRETE KERB LAID ON 225 BRICK WORK.
 4. MANHOLE AREA TO BE FILLED WITH RIVER SAND.
 5. ALL WELDING TO BE CONTINUOUS.
 6. ALL STEEL WORK TO BE APPLIED WITH TWO COATS OF ANTICORROSION PAINT OF APPROVED QUALITY AND COLOUR.



SECTION X-X



SECTION Y-Y

JOB TITLE:
PROPOSED UNDER GROUND STORAGE TANK AT CAMPBELL PARK FUEL STATION

DRAWING TITLE:
5000 GALLON UNDER GROUND STORAGE TANK

COLombo MUNICIPAL COUNCIL
MUNICIPAL ENGINEER'S DEPARTMENT

DRG. NO.	STR/2022/	SHEET NO.
JOB NO.		
DRAWN BY:	DESIGNED BY:	
NALKA GUNAWARDENA	K.A.A.S. LASORITHA ENGINEER (DESIGNS)	
CHECKED BY:	CHECKED BY:	
	W.A.S. SAROJINI D. D. ENG. (DESIGNS)	
D.O.A. (S)	RECOMMENDED BY:	
SCALES:	G.A.S. SURESH DIRECTOR (ENGT.D.R.S.)	
1:20, 1:10	APPROVED BY:	
DATE:	K.A.S. SURESH D.M.A.C. (ENR. SERVICES)	
24.03.2022		